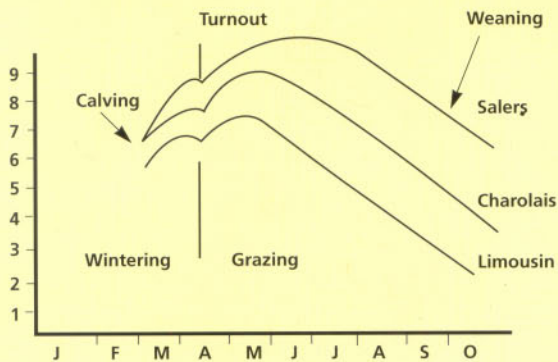


# £ *Salers Cows for Milky Mothers* £

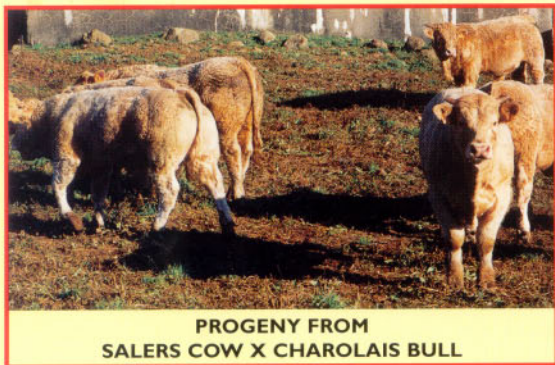
The Salers breed has been milk recorded in France since 1925. Selective breeding produced a cow that would simultaneously nurse a calf and produce quality milk for the local cheese industry.

The long lactation period of the Salers cow reduces the need for creep feeding of calves.

Variation in milk production of suckler cows during lactation.

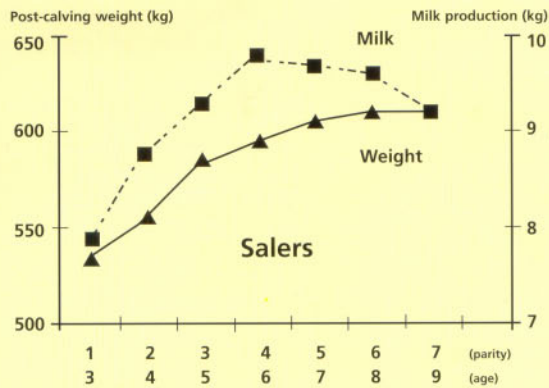


MILK INTO MEAT INTO MONEY



PROGENY FROM SALERS COW X CHAROLAIS BULL

Evolution of liveweight and milk yield with age (INRA Farm of Marcenat, upland region)



**Salers**

**Salers Cattle Society of the United Kingdom & Ireland**  
 Secretary: JOHN CROWE  
 Brook House Farm, Norbury, Whitchurch, Shropshire.  
 Telephone: 01948 667223 Fax: 01948 667448  
 Email: [johncrowe@salers.freeserve.co.uk](mailto:johncrowe@salers.freeserve.co.uk)  
 Website: [www.salers.freeserve.co.uk](http://www.salers.freeserve.co.uk)



# PROFITABILITY BEGINS WITH A LIVE CALF



Worldwide research shows that **Salers** are the **Supreme Suckler Breed** for easy calving

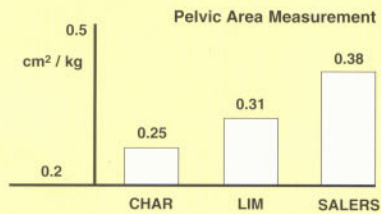


UK

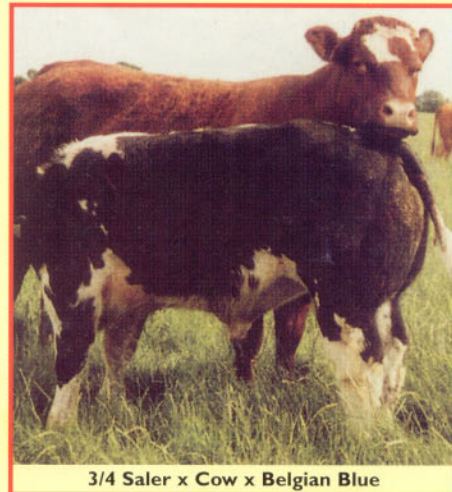
Greenmount College, Northern Ireland criss cross breeding project with Salers & Limousin cattle. Target "best in class" = 0.98 calves per cow per year. Project herd in 1998/99 achieved 0.98 (42 calves from 43 cows to bull).



FRANCE



Data from F. Merisier INRA.



3/4 Saler x Cow x Belgian Blue



USA

"We've identified pelvic area to be a highly heritable trait with important breed differences contributing to calving ease. CSU research involving over 900 yearling bulls representing 17 breeds identified Salers with the largest mean pelvic area. This data confirms my experience in collecting prebreeding pelvic measurements of yearling heifers and their subsequent calving; that large, roomy pelvic structure and calving ease are Salers traits that just come with the cattle!"

Don LeFever - Colorado State University



CANADA

Expected ease of calving (% unassisted) for matings to heifers.

Sire Breed	Nº	Matings Within Breed	Matings Across All Breeds
<b>SALERS</b>	<b>2673</b>	<b>89</b>	<b>84</b>
Angus	2748	81	80
Hereford	6967	79	77
Charolais	6855	70	68
Simmental	6294	68	65

Data from P.G. Sullivan & J.W. Wilton. University of Guelph Publication.

**Put some Salers blood into your Suckler herd for an easy Calving time.**